

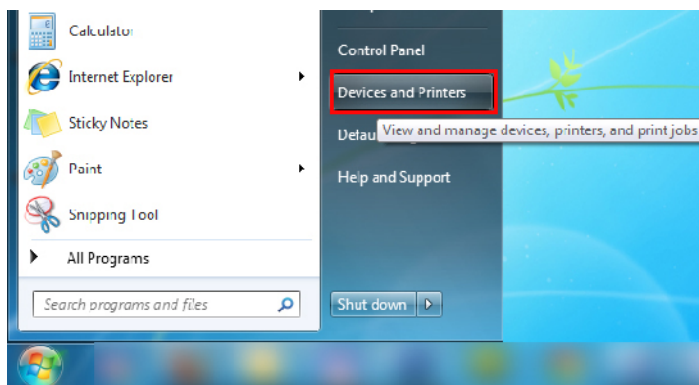
Instalare drivere HP LaserJet 9000mfp –Windows 7

Pentru instalarea multifunctionalei **HP LaserJet 9000mfp**, veti avea nevoie de driverele specifice versiunii de Windows 7 pe care o aveti instalata: 32-bit/86-bit.

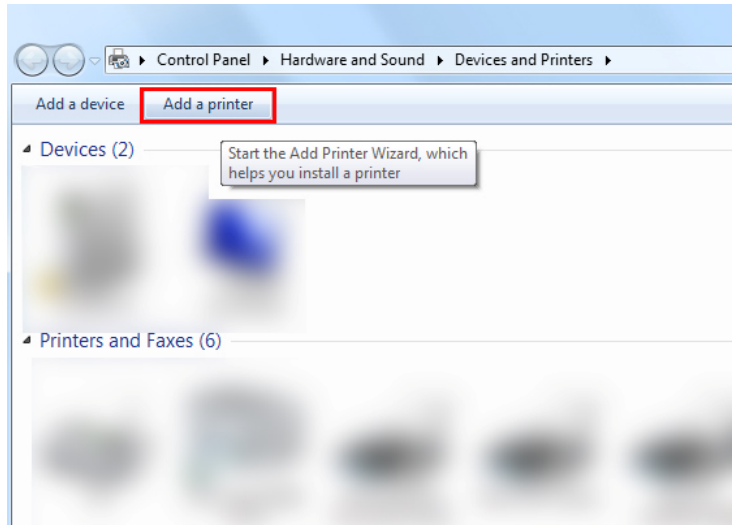
Pe Cd-ul primit din partea EcoCart Holding SRL, veti putea gasi driverele necesare instalarii.

Mai jos aveti un exemplu de instalare :

1. Mergeti in Start->Devices and Printers;



2. Apasati butonul: Add a printer;

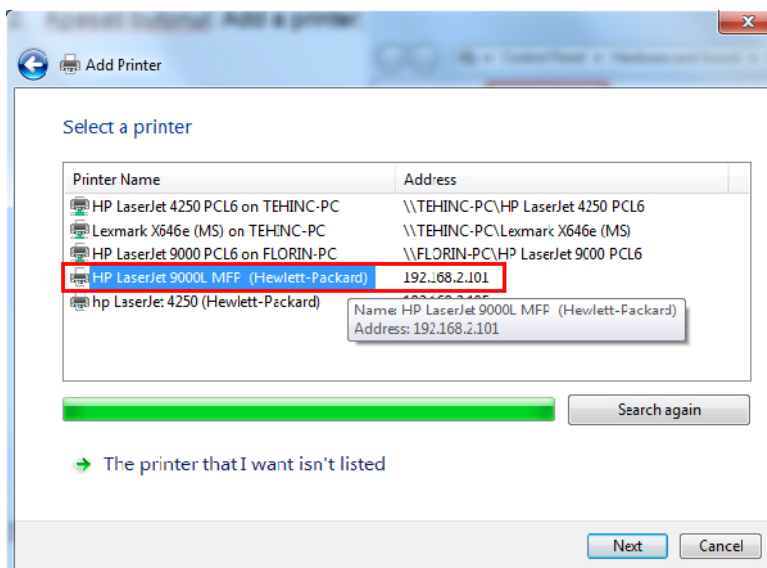


3. Selectati a doua optiune;

→ Add a local printer
Use this option only if you don't have a USB printer. (Windows automatically installs USB printers when you plug them in.)

→ Add a network, wireless or Bluetooth printer
Make sure that your computer is connected to the network, or that your Bluetooth or wireless printer is turned on.

4. Selectati modelul multifunctionalei, 9000L MFP, apoi apasati next:



5. Apasati butonul Have Disk, si mergeti in Path-ul Cd-ului, selectand Modelul Multifunctionalei, si versiunea de Windows 7 folosita;
6. Denumiti imprimanta iar apoi finalizati instalarea .